



## Green Screen™ Barrier Mix

### ANNUAL FOOD PLOT

Green Screen™ is an annual seed mix that has the potential of growing up to 12 feet tall and is a great planting for use as a visual barrier along roads, access paths to your stand and around your tripod stand. With some planning, you can plant in areas that you may want to place a ground blind later in the season. Green Screen also has great standability—even during the winter months when planted at 10-12 lbs. per acre. Your deer may even turn to Green Screen as a food source in the winter months.

**Mix includes:** 3 sorghum varieties for standability & varied maturity.

**Planting Dates:** June 1 to July 1

**Planting Depth:** 1/2" to 1"

**Planting Rate:** 12 lbs./acre planted in 30" rows

*Quality habitat and food  
plot seed for optimal draw  
and healthier wildlife.*

**ARROW  
SEED**  
More for your Buck



## More Habitat Mixes

Arrow Seed has additional food plot mixes for game birds as well as habitat and conservation mixes to provide nesting cover, loafing areas, brood rearing habitat and winter cover. Contact us for details.

## About Arrow Seed Company

The Arrow Seed Company is a third generation family owned business established in Broken Bow Nebraska in 1946. We have been producing and conditioning forage and conservation grass seed for over 65 years.

Arrow Seed has developed a set of mixes specifically designed to perform almost anywhere you find whitetail deer. Our mission is to help the big game enthusiast provide the best possible nutrition and habitat for their deer. Maximum results are achieved from years of ongoing testing, research and development. We have an agronomist on staff and we work directly with industry experts testing biomass samples and are constantly monitoring our results. That combined with our state of the art seed cleaning facility and our passion for growing big bucks results in you getting the highest quality seed from the bag to the field.

When you put an Arrow Seed product in the ground you can be assured you will get **More for Your Buck.**

### Arrow Seed® Company, Inc.

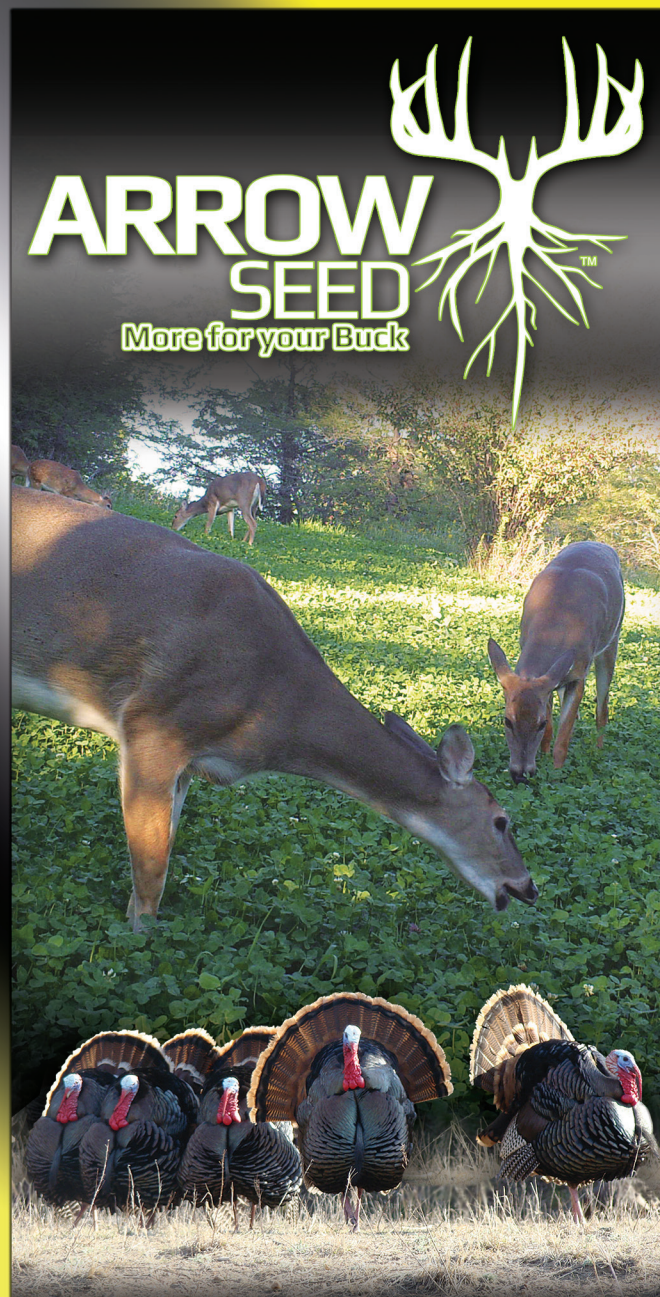
126 North 10th Avenue  
Broken Bow, Nebraska 68822

**800-622-4727**

Email: [info@arrowseed.com](mailto:info@arrowseed.com)  
[www.ArrowSeed.com](http://www.ArrowSeed.com)



**Arrow Seed food plot mixes are  
available from this authorized dealer:**



**Your source for quality  
habitat and food plot seed.**

**Arrow Seed® Company, Inc.**

**800-622-4727** [www.ArrowSeed.com](http://www.ArrowSeed.com)





## Krunch N Munch™

### ANNUAL FOOD PLOT

Plant this tasty mix of crunchy greens each spring to give your herd a great diversity of forage throughout the summer. Then watch them munch their way to their full potential. It can also be planted in the fall for a high quality food plot.

**Mix Includes:** Annual Rye Grass, White Clover, Forage Rape Seed, Crimson Clover, Winter Rye, Alfalfa, Oats, and Turnips.

**Planting Dates:** April-May or Aug-Sept

**Planting Depth:** 1/4" to 1/2"

**Planting Rate:** 29 lbs./acre drilled. Add 20% for broadcast/acre



## Deer Delight™

### ANNUAL FOOD PLOT MIX

High protein summer annual seed mix deer will relish. Great for drawing and building strong bucks. Extremely high nutritional value and palatability for adding points to your trophy's score. Plant in late spring for awesome summer, fall, and early winter drawing power.

**Mix Includes:** Turnips, Peas, Forage Soybeans & Grain Sorghum

**Planting Date:** May 15-June 15

**Planting Depth:** 1/4" to 1"

**Planting Rate:** 36 lbs./acre drilled



## Full Potential™

### PERENNIAL FOOD PLOT

Deer are drawn to lush, green alfalfa fields. We're making that draw more appealing by blending our best red and white clover to our quality alfalfa. Aid Mother Nature in making sure that your deer are healthy and reaching their full potential by adding this nutrient rich perennial legume mix to their diet. If you plant it, they will come.

**Mix Includes:** Alfalfa and Clovers

**Planting Dates:** April 10-May 15 or Aug 1-Sept 1

**Planting Depth:** 1/4" to 1/2"

**Planting Rate:** 10-12 lbs./acre drilled; 13-15 lbs./acre broadcast



## Brassica Plus™

### ANNUAL FOOD PLOT

This mix of brassicas provides sweet forage content after a period of frost. The addition of Annual Ryegrass provides early grazing giving the brassicas time to establish. Can be planted in the spring for high forage volume, or fall planted for higher quality forage.

**Mix Includes:** Hybrid Forage Brassica, Turnips, Rape Seed, Radish, and Annual Ryegrass.

**Planting Date:** May 1-June 1 or August

**Planting Depth:** 1/4"

**Planting Rate:** 7.25 lb./acre (Broadcast then pack well)



## Frost Line™

### ANNUAL FOOD PLOT

Fall and Winter months can be some of the hardest times on deer. Frost Line will ensure that your herd will have adequate food as well as a highly digestible and nutritional forage through the winter.

**Mix Includes:** Purple Top Turnips, Rape Seed, Daikon Radish, Winter Peas, Winter Rye and Oats.

**Planting Date:** August

**Planting Depth:** 1/4" to 3/4"

**Planting Rate:** 59.5 lbs./acre drilled; 75 lbs./acre broadcast



## Trophy Banquet™

### PERENNIAL FOOD PLOT

Bring them back year after year with this perennial forage mixture. This food plot provides great diversity, awesome palatability, exceptional protein and years of longevity.

**Mix Includes:** Alfalfa, Clover, Chicory & Orchardgrass.

**Planting Dates:** April 15-May 15 or Aug 10-Sept 15;

**Planting Depth:** 1/8" to 1/2"

**Planting Rate:** 12 lbs./acre drilled;  
13-15 lbs./acre broadcast

[View more](#)

